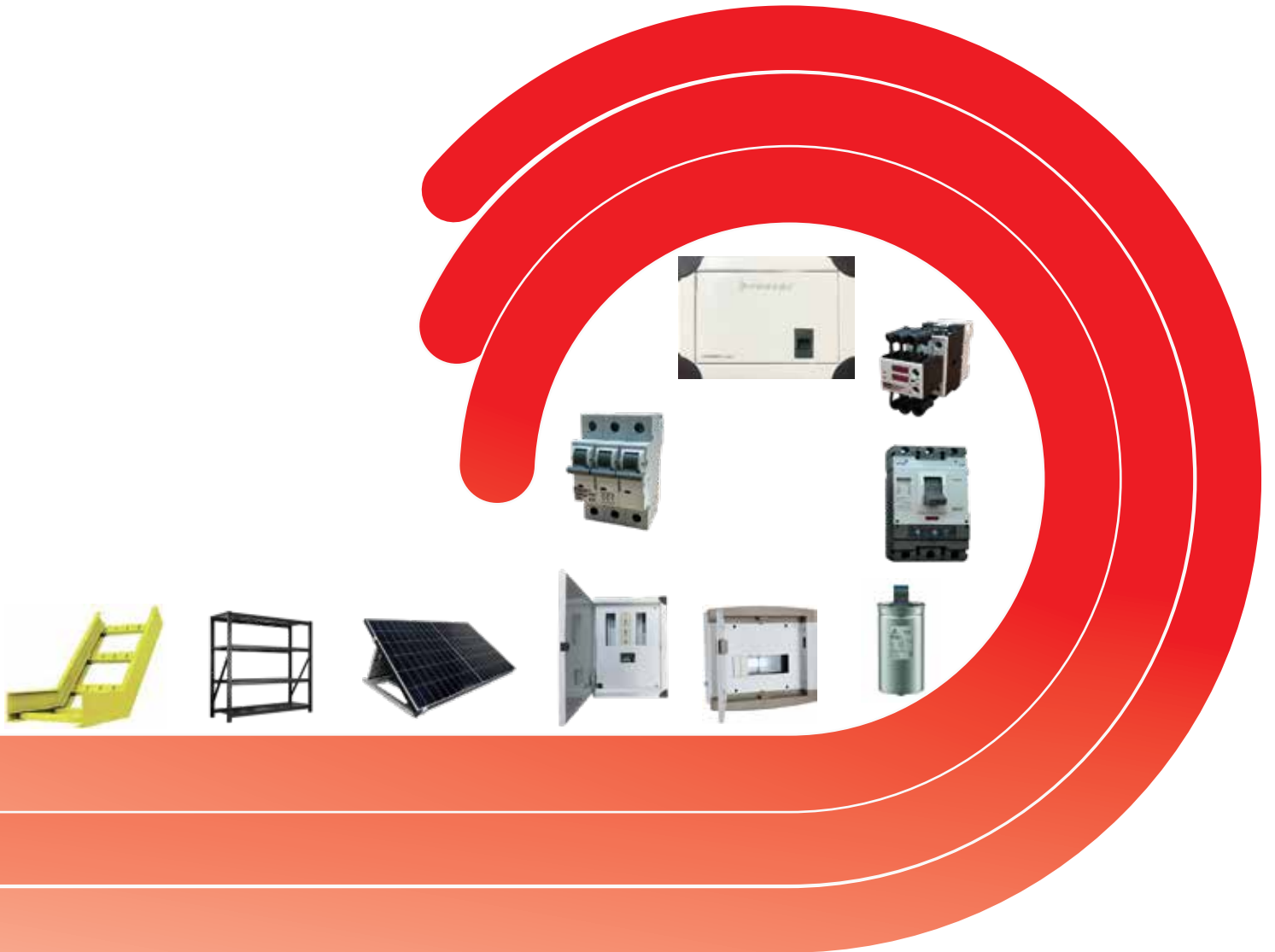




# PROTEC



**▶POWERtrac**

## **LOW VOLTAGE PRODUCTS**

**Protec Power Systems**

a product of ▶POWERtrac family

## DOUBLE DOOR SDB SP&N 6 way (I-series)

PROTEC



(Model: PRO-SP06)

### Salient Features

- Export quality, aesthetical beautiful and well-designed.
- Model: PRO-SP06
- Dimension: 270x270x86 mm / 10.6x10.6x3.3 inches
- Sheet steel clad with ss nut bolt, dust and vermin proof,
- Epoxy resin powder coated heat painted - RAL 7035, wall mounting type.
- IP Ingress protection IP41, IP51
- Separate space shall not be provided for incoming circuit breakers.
- 2A to 63A single pole circuit breaker usable.
- Door earthing & neutral bar including.
- In the front frame 4 corners are protected by plastic mold.

## DOUBLE DOOR SDB SP&N 8 Way (I-series)

### Salient Features

- Export quality, aesthetical beautiful and well-designed.
- Model: PRO-SP08
- Dimension: 270x270x86 mm / 10.6x10.6x3.3 inches
- Sheet steel clad with SS nut bolt, dust and vermin proof,
- Epoxy resin powder coated heat painted - RAL 7035.
- IP Ingress protection IP41, IP51



(Model: PRO-SP08)

## DOUBLE DOOR SDB SP&N 10 Way (I-series)



(Model: PRO-SP10)

### Salient Features

- Export quality, aesthetical beautiful and well-designed.
- Model: PRO-SP10
- Dimension: 270x270x86 mm / 10.6x10.6x3.3 inches
- Sheet steel clad with SS nut bolt, dust and vermin proof,
- Epoxy resin powder coated heat painted - RAL 7035, wall mounting type
- IP Ingress protection IP41, IP51

## DOUBLE DOOR SDB SP&N 12 Way (I-series)

### Salient Features

- Export quality, aesthetical beautiful and well-designed.
- Model: PRO-SP12
- Dimension: 305x270x86 mm / 12x10.6x3.3 inches
- Sheet steel clad with SS nut bolt, dust and vermin proof,
- Epoxy resin powder coated heat painted - RAL 7035
- IP Ingress protection IP41, IP51



(Model: PRO-SP12)

## DOUBLE DOOR SDB TP&N 4 Way (I-series)

PROTEC



( Model: PRO-TPN4 )

### Salient Features

- Export quality, aesthetical beautiful and well-designed.
- Model: PRO-TPN4
- Dimension: 394x430x115mm / 15.5x16.9x4.5 inches
- Sheet steel clad with SS nut bolt, dust and vermin proof,
- Epoxy resin powder coated heat painted - RAL 7035, wall mounting type
- IP Ingress protection IP41, IP51

## DOUBLE DOOR SDB TP&N 6 Way (I-series)

### Salient Features

- Export quality, aesthetical beautiful and well-designed.
- Model: PRO-TPN6
- Dimension: 394x485x115mm / 15.5x19.1x4.5 inches
- Sheet steel clad with SS nut bolt, dust and vermin proof,
- Epoxy resin powder coated heat painted - RAL 7035, wall mounting type
- IP Ingress protection IP41, IP51



( Model: PRO-TPN6 )

## DOUBLE DOOR SDB TP&N 6 Way (I-series)



( Model: PRO-TPN8 & PRO-TPN12 )

### Salient Features

- Export quality, aesthetical beautiful and well-designed.
- Model: PRO-TPN8 and PRO-TPN12
- Dimension: 394x540x115 mm and 394x650x115mm
- Sheet steel clad with SS nut bolt, dust and vermin proof,
- Epoxy resin powder coated heat painted - RAL 7035, wall mounting type
- IP Ingress protection IP41, IP51
- Separate space will be provided for incoming TP MCB circuit breakers.

## DOUBLE DOOR SDB TP&N 8 and 12 Way (M2-series)

### Salient Features

- Export quality, aesthetical beautiful and well-designed.
- Model: PRO- M2TPN8 and PRO- M2TPN12
- Dimension: 500x485x120 mm and 730x485x120 mm
- Sheet steel clad with SS nut bolt, dust and vermin proof,
- Epoxy resin powder coated heat painted - RAL 7035, wall mounting type
- IP Ingress protection IP41, IP51
- Separate space will be provided for incoming TP MCCB circuit breakers.
- 25A to 160A Three pole circuit breaker usable.
- Busbar rated 200A, 230V/415V, 50Hz.



( Model: all series are available )

## DOUBLE DOOR SDB

PROTEC

### TP&N 8 and 12 Way (P-series)



( Model: all series are available )

#### Salient Features

- Export quality, aesthetical beautiful and well-designed.
- Model: PRO- P2TPN4 to PRO- P2TPN12
- Sheet steel clad with SS nut bolt, dust and vermin proof,
- Epoxy resin powder coated heat painted - RAL 7035, wall mounting type
- IP Ingress protection IP41, IP51
- Separate space will be provided for incoming TP MCCB circuit breakers.
- 25A to 160A Three pole circuit breaker usable.

#### Salient Features

- Export quality, aesthetical beautiful and well-designed.
- Model: PRO-H-SP8 and PRO-H-SP12
- Sheet steel clad with SS nut bolt, dust and vermin proof,
- Epoxy resin powder coated heat painted - RAL 7035, wall mounting type
- IP Ingress protection IP41, IP51
- 6A to 63A Three pole circuit breaker usable.
- Threr are full series with top and bottom non-metel brackets.
- Horizontal and vertical type.

## DOUBLE DOOR SDB

### TP&N 8 and 12 Way (H-series)



( Model: all series are available )

## MCB

### Miniature Circuit Breaker



( 5 years warranty )

#### Salient Features(IEC-60898-2002)

- World famous DORMAN SMITH, UK
- World famous INDOASIAN, France
- INDOASIAN a sister concern of LEGRAND, France.
- Range : 0.5 to 63 Amps 240/415V, Insulation 500V
- Available in SP, SPN, DP, TP, TPN & FP
- Breaking capacity 10KA
- Protection against Short Circuit & Over load
- Low watt loss (40% to 75% of stipulated value)
- Finger Touch proof Trip free Mechanism
- KEMA, TUV Certified and CE marked

#### Salient Features (IEC-60947-2)

- World famous DORMAN SMITH, UK
- World famous INDOASIAN, France
- INDOASIAN a sister concern of LEGRAND, France.
- Rating 10A - 1250 A, IP 40 in 6 frame size
- Rated Voltage 240/415V, insulating voltage 690V
- Accessories like Under voltage and Shunt trip release,
- Trip alarm and Auxiliary Contact
- Thermal magnetic trip available

## MCCB

### Moulded Case Circuit Breaker



( 5 years warranty )

## Air Circuit Breaker



( 5 years warranty )

## Salient Features (IEC-60947-2)

- 800 A to 6300 A, 3p & 4p
- Electrical Fixed or drawout type
- Easy Installation, Micro processor Based | Electrical controll
- Temperature Condition: -5°C - 40°C; the average value within 24h shall not exceed +35°C (special situation excluded)
- Altitude : < 2000m, Mechanical durability- 20000
- Pollution grade : Grade 3 at mounting site, relative humidity not exceed 50% at the max temperature of +40°C, higher relative humidity is allowable under lower temperature, RH could be 90% at +20°C, special measures should be taken to occurrence of dews

## Residual Current Circuit Breaker



( 5 years warranty )

## Salient Features (IEC-60947-2)

- World famous DORMAN SMITH, UK
- World famous INDOASIAN, France
- HIGHLY SENSITIVE, Detection of residual currents as low as 30mA
- Highly sensitive miniature relay ensure positive detection of earth leakage currents as low as 30mA in less than 40 milli seconds and is protected from nuisance tripping against transient voltages (lightning, line disturbances.) and transient currents (from high capacitive circuits).
- USER FRIENDLY INSTALLATION, Easily mounted on a standard DIN Rail 35 mm.

## LV ISOLATOR

## Manual Change Over Switch

## Salient Features

- Suitable for OFF load Isolation and manual Changeover
- Free from Electrical Hazard
- The Same Change Over can be transferred as Auto Change Over
- Easy to Install
- Looking Like MCCB and Preengineered contact points
- Most suitable for Industrial Use



## CAPACITOR SWITCHING CONTACTORS

## Salient Features



- World class contactors from INDOASIAN, France
- Intelligent Technology, ACB usage
- Operational up to 350V and 630 A
- Easy Installation, High Quality contact points  
70% copper and 30% Brush IEC 947 - 2 & VDE 0660  
Auxiliary contactors are 2 no. & NC mostly

**(Harmonic filter and thyristor)**



**Salient Features**

- Harmonic Filtration Reactor, Detuned
- Air and iron core, Dry type 7% 13% deigned filter
- Indoor, Single phase or three phase
- Enclosures are available on demand Aluminum or copper winding, AL 7032 or other colors
- - 40 °C / + 55 °C ambient temperature range
- F class (155 °Q or customer specific design
- Fiberglass spacers are used in order to provide ease of cooling
- Air (air-natural) cooling method, Epoxy based paint and insulating varnish.

**Current Transformer**

**Salient Features**

- Intelligent Technology
- Safety
- Easy Installation
- Class of accuracy: 0.1 to 1
- POWERtrac brand
- Different design and
- Suitable for panels and metering



**Potential Transformer**



**Salient Features**

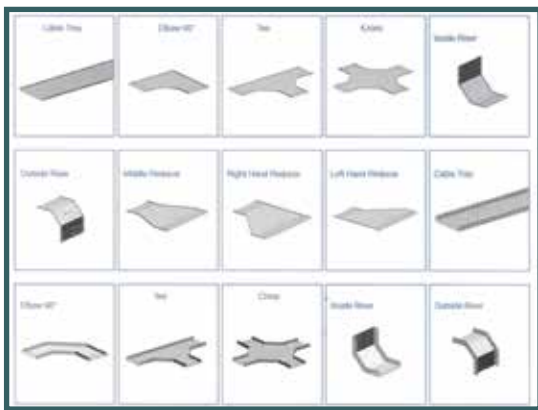
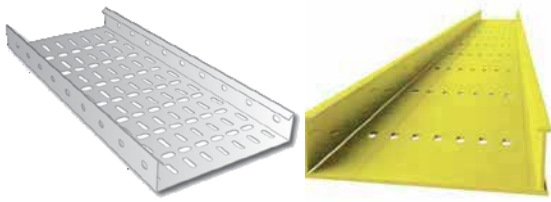
- Intelligent Technology
- Safety
- Easy Installation
- Class of accuracy: 0.1 to 1
- POWERtrac brand
- Different design and
- Suitable for panels and metering

**Instruments**

**Salient Features: (we are the sole distributor of MECO)**

- Panel and Switchboard Instruments
- Testing & Measuring Instruments
- Power and Harmonics Analyzer
- Calibrating Equipments
- Environmental Testing Instruments
- Battery Testers
- Solar Analyzers
- Clamp-On CT's & Flexible AC Current Probe





### Salient Features

- World class design
- Intelligent Technology
- Safety hot deep galvanization is also available on request
- Easy Installation, High Quality contact points
- No sharp bending
- Insulation friendly for cable laying

1. Ladder Type Cable Tray
2. Ventilated Trough Type Cable Tray
3. Straight Splice Plate
4. 45° & 90° Horizontal Bend, Ladder Type Cable Tray
5. Horizontal Tee, Ladder Type Cable Tray
6. Horizontal Cross, Ladder Type Cable Tray
7. 90° Vertical Outside Bend, Ladder Type Cable Tray
8. 45° Vertical Outside Bend, Ventilated Type Cable Tray
9. 30° Vertical Inside Bend, Ladder Type Cable Tray
10. Vertical Bend Segment (VBS)
11. Vertical Tree Down, Ventilated Trough Type Cable Tray
12. Left Hand Reducer, Ladder Type Cable Tray
13. Frame Type Box Connector
14. Barrier Strip Straight Section
15. Solid Flanged Tray Cover
16. Ventilated Channel Straight Section
17. Channel Cable Tray, 90° Vertical Outside Bend

## MECHANICAL, ELECTRICAL, PLUMBING (MEP)

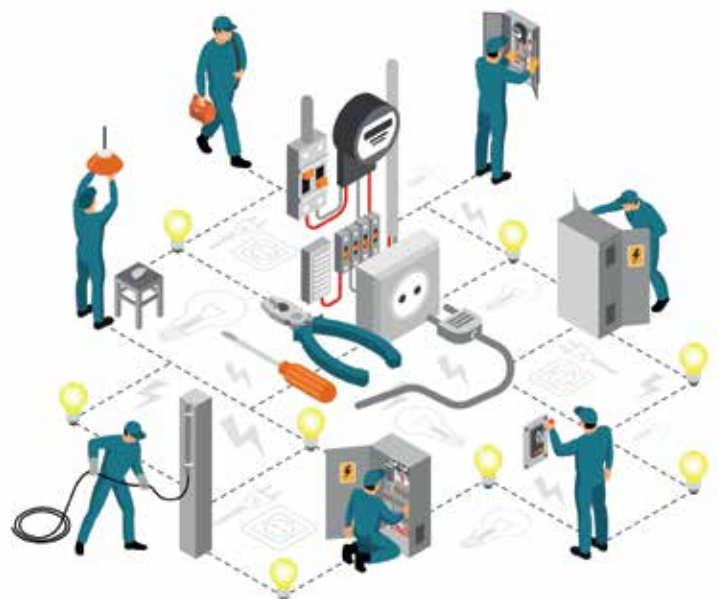
### Contract

### Salient Features

- Quality Assurance
- Cost Savings
- Safety Measures
- Improved Quality of Work and Life
- Energy-Saving
- System Sustainability

We provide a full range of services connected with Mechanical, Electrical and Plumbing (MEP) installations for commercial, private and public sector projects.

Owing to our team's in-house expertise we guarantee a pro-active approach and seek to work with professionals to ensure an efficient delivery of services from the tender phase to project completion. We employ Project Managers, Technical Managers and Site Managers who offer a wide and inclusive approach with attention to other trades and aspects of the construction process.



Panel



Salient Features

- Accuracy class 0.5 as per CBIP 88/IEC
- Ratings : -/5A CT operated,
- All standard anti tamper features provided
- Optical communication port (optional)
- e Logging & display of tamper data Optional features : TOD, load survey data, tamper information downloadable to CMRI through optical port. Display in absence of power supply
- World Famous Secure Meter (Udoypur, India) of PRI group, UK
- 0.5 Class accuracy LT (415 V) CT
- Type & Model for LT Metering unit: PLM415
- Dimension : As asked by client or tenderer

SOLAR Systems

Salient Features

- Both mono and poly
- Supports a wide variety of solar related products and systems.
- Designed, supplied and installed numerous turnkey projects around the country
- Multi crystalline (also called polycrystalline)
- Durable and extremely long-lasting
- Multi crystalline cells have an efficiency of 9-13%
- Compared to 4-8% for mono crystalline cells
- Off Grid & on Grid
- Solar street lights



MPP CAPACITOR

Cylindrical Round & Square Shaped



Salient Features

- Improves system voltage & substantially reduces kVA demand.
- Reduces line losses.
- Increases life of electrical equipment with better performance
- Removes interference.
- Minimum power loss
- Minimum temperature rise with high thermal stability.
- Gas filled and jelly filled both
- Negligible maintenance.
- 400V to 480V
- Controller 6stage and 12 stage

PLATE

Switch and Socket

Salient Features

- Double Rocker Mechanism which acts as arc chamber and quenches arc
- Silver cadmium alloyed contacts for trouble free long lasting
- Shrouded terminal for safety against electric shocks, IP 20 protection
- Night glowing switches for easy to locate at night







**Salient Features**

- POWERtrac fabrication system is now equipped with compliance requirements for export oriented Industries.
- We are making panels with real dust and vermin proof with CABLE GLAND DUST FILTER, VENTILATION FAN etc.
  - We also offering LIGHTNING EARTHING SYSTEMS, LOAD BALANCING HARMONIC ANALYSIS etc.
  - We are making Panels and Transformer for SIEMENS Bangladesh.

**HT CT OPERATED METERING  
Panel**

**Salient Features**

- Accuracy class 0.5 as per CBIP 88/1 EC
- Ratings : -/5A CT operated,
- All standard anti tamper features provided
- Optical communication port (optional)
- Logging & display of tamper data Optional features :
- TOD, load survey data, tamper information downloadable to
- CMRI through optical port. Display in absence of power supply
- World Famous Secure Meter (Udoypur, India) of PRI group, UK
- 0.5 Class accuracy HT (11KV) CT & PT
- Type & Model for HT Metering unit: PHM12, PMNNHM12
- Dimension : As asked by client or tenderer



**DROP OUT  
Fuse**



**Salient Features**

- World famous Technology
- 11KV application PROTEC brand
- Well designed brackets
- Porcelain Body
- 75KV BIL
- Rated Max Voltage is 15KV

**LIGHTNING  
Arrester**

**Salient Features**

- Intelligent Technology
- 11KV application PROTEC Brand
- Rated voltage 9KV
- Resin body of insulation
- Compact ZNO2 Resistor
- System Voltage 12KV
- Impulse withstand current 55KA



## Tube Light and Bulb



### Salient Features

- LED tube light, LED Bulbs and industrial light
- light shed
- Low power consumption
- Longer life 30000hrs
- High lumen and flux density
- Solar street light with LED

## SINGLE & THREE PHASE

### Meter

### Salient Features

- 1.0 Percent Accuracy as per IEC61036 2000
- Basic current 10A and Max current 40A and 60A
- Phase out and neutral tempering feature application
- Batter backup i.e, Display in absence of power supply.
- LCD Display (stepper motor if needed).
- Power consumption <1.5W per phase (<2.5VA for current circuit)
- 1 Phase 2wire and IP 51



### Salient Features

- Accuracy class 1.0 as per CBIP 88/IEC6036 2000 BDS 1721 2003
- Ratings : Basic current 10,20A Maximum Current 40A, 60A
- CMRI through optical port
- Display in absence of power supply (Battery back-up)

## INDUSTRIAL

### Rack



### Salient Features

- Heavy duty steel construction with welded end frames
- Protective powder coated finish
- No tool assembly
- Double-hook tie supports
- Connect 2 or more racks (sold separately)
- Expamdable and Extandable bloted system

## CATALOGUE STAND

### Mobile Stand

### Salient Features

- Customizable As per Requirements
- Metal Body: Full Metal body. durable and long-lasting use
- 4 Display Pockets: This literature rack has 10.2"x14.2" display pockets displaying A4+ paper size, such as magazines, brochures, printed literature, and other literary materials.
- Sturdy and Stable: This literature display rack is made of an aluminum alloy frame and PC board, which are rust-free and corrosion protection. The materials ensure durable and long-lasting use.



**Industrial voltage stabilizer**



**Salient Features**

- Rating: 650 VA to 1250 kVA
- Output voltage 100V/110V/115V/120V/200V/220V/230V
- Three phase Common, Three phase individual
- Overload alarm level 100%-120%.
- Over load shutdown level 120%-190% .
- Air Cooled and LED Display
- Automatic Start With Time Delay
- Components from china assembled in Bangladesh

**Uninterruptible power supply**

**Salient Features**

- Rating: 10 kVA to 200 kVA
- Online UPS and Offline UPS
- Frequency Range 40~70 Hz, Output Frequency Range 46~54Hz
- Noise Level Less than 60dB @1 Mete
- If the UPS is installed or used in a place where the altitude is higher than maximum height, the output power will be derated 1% per 100m.z



**Instant Power Supply**



**Salient Features**

- 220V Stable Output
- Auto Thermal Protection
- Fire resistance tech included
- LCD info panel (2 Line & 4 Line)
- Stylish casing
- UPS mode included
- Fuzzy logic control charging technology
- Over Load, Short Circuit, EMI, Surge, Spike protection
- Range from: 650VA - 10KVA (220V - 50Hz~60Hz)

**Fuse & Fuse Holde**

**Salient Features (IEC-60898-2002)**

- World famous HAUSMANN, NTOO and NT000, German Technology
- For overload & Shortcircuit protections,
- IEC60 269, Conforms to International Standards.
- HIGH BREAKING CAPACITY, 120kA
- FAULT INDICATION, Red flap comes out instantly on fusing.
- Ceramic Body and base
- Pure copper contacts
- The best ever fuse technology






**PROTEC ELECTRONICS LTD.  
PROTEC POWER SYSTEMS  
PROTEC TRAINING CENTER**

**knoprotec.com  
ohmistiry.com**

## WE ARE AT

 CNS Tower, 43/R/5-A, West Panthapath, Dhaka-1215, Bangladesh

 Goshinga, Sreepur, Gazipur

 [www.powertrac-bd.com](http://www.powertrac-bd.com)

 [www.protecpowersystems.com](http://www.protecpowersystems.com)

 +88 01974655026 /01974655013

 [info@powertrac-bd.com](mailto:info@powertrac-bd.com)

## OUR SERVICES

- \* Design, Development & Implementation of the most Correct Electrical Systems for Industrial & Commercial Complexes Electrifications
- \* Renovation of old Electrical Systems
- \* Retrofitting of MV & LV Switchgear Units
- \* Load Analysis of Industrial & Commercial Complexes
- \* Harmonic Analysis of Industrial & Commercial Complexes
- \* DC Fan, DC Light
- \* MEP (Mechanical, Electrical, Plumbing) Contract